

SPARE PARTS SECTION

HYDRAULIC PANBRAKE

Models

PB-440A/T, PB-825A

Order Code S581A/T, Order Code S583B

PB-830A/T, PB-860T, PB-1030T

Order Code S584A/T, Order Code S586T, Order Code S585T

Edition No : HPB-04

Date of Issue : 11/2020

The following section covers the spare parts diagrams and lists that were current at the time this manual was originally printed. Due to continuous improvements of the machine, changes may be made at any time without notification.

HOW TO ORDER SPARE PARTS

1. Have your machines **model number, serial number & date of manufacture** on hand, these can be found on the specification plate mounted on the machine
2. A scanned copy of your parts list/diagram with required spare part/s identified.

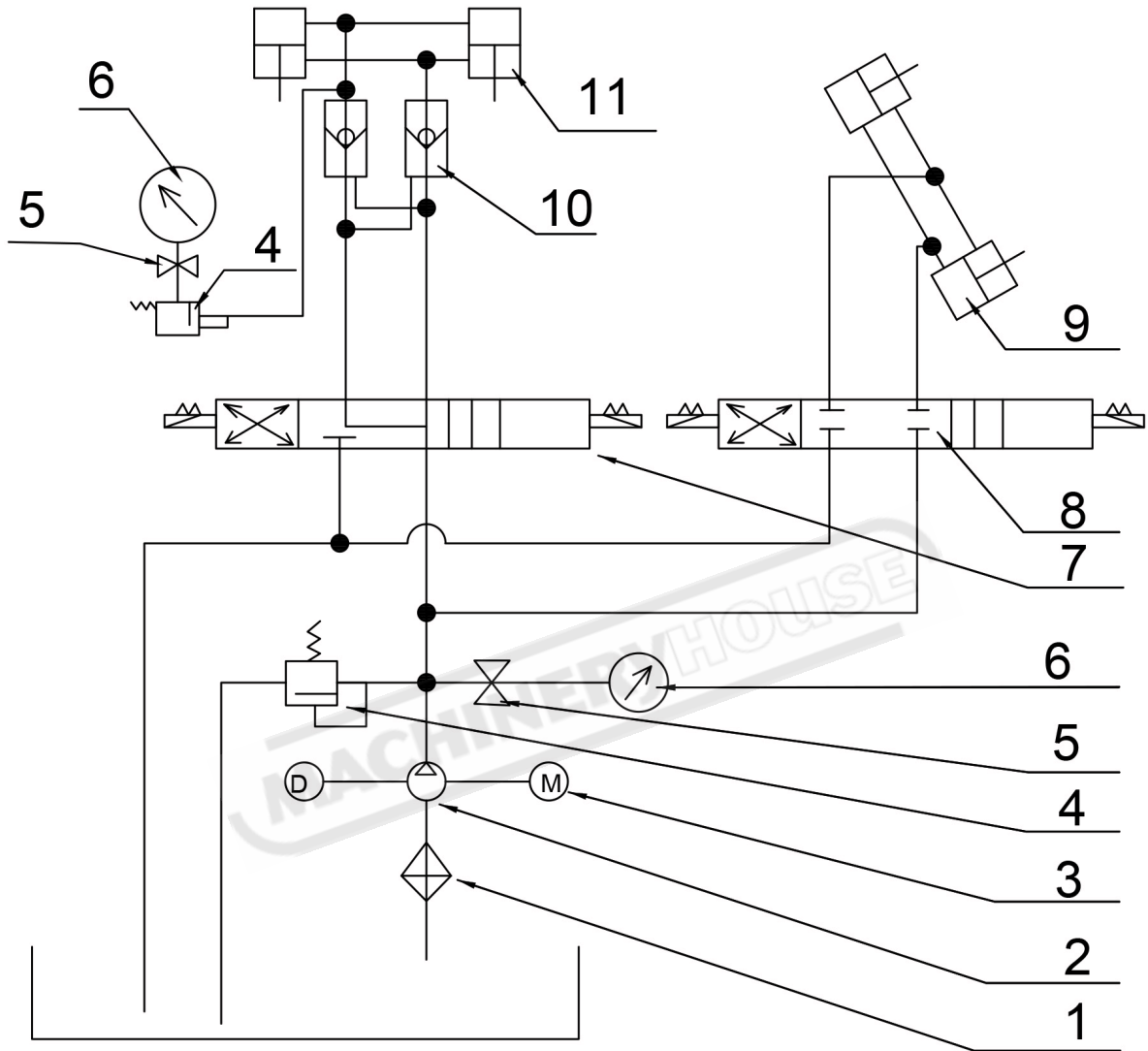
NOTE: SOME PARTS MAY ONLY BE AVAILABLE AS AN ASSEMBLY

3. Go to www.machineryhouse.com.au/contactus and fill out the inquiry form attaching a copy of scanned parts list.

CONTENTS

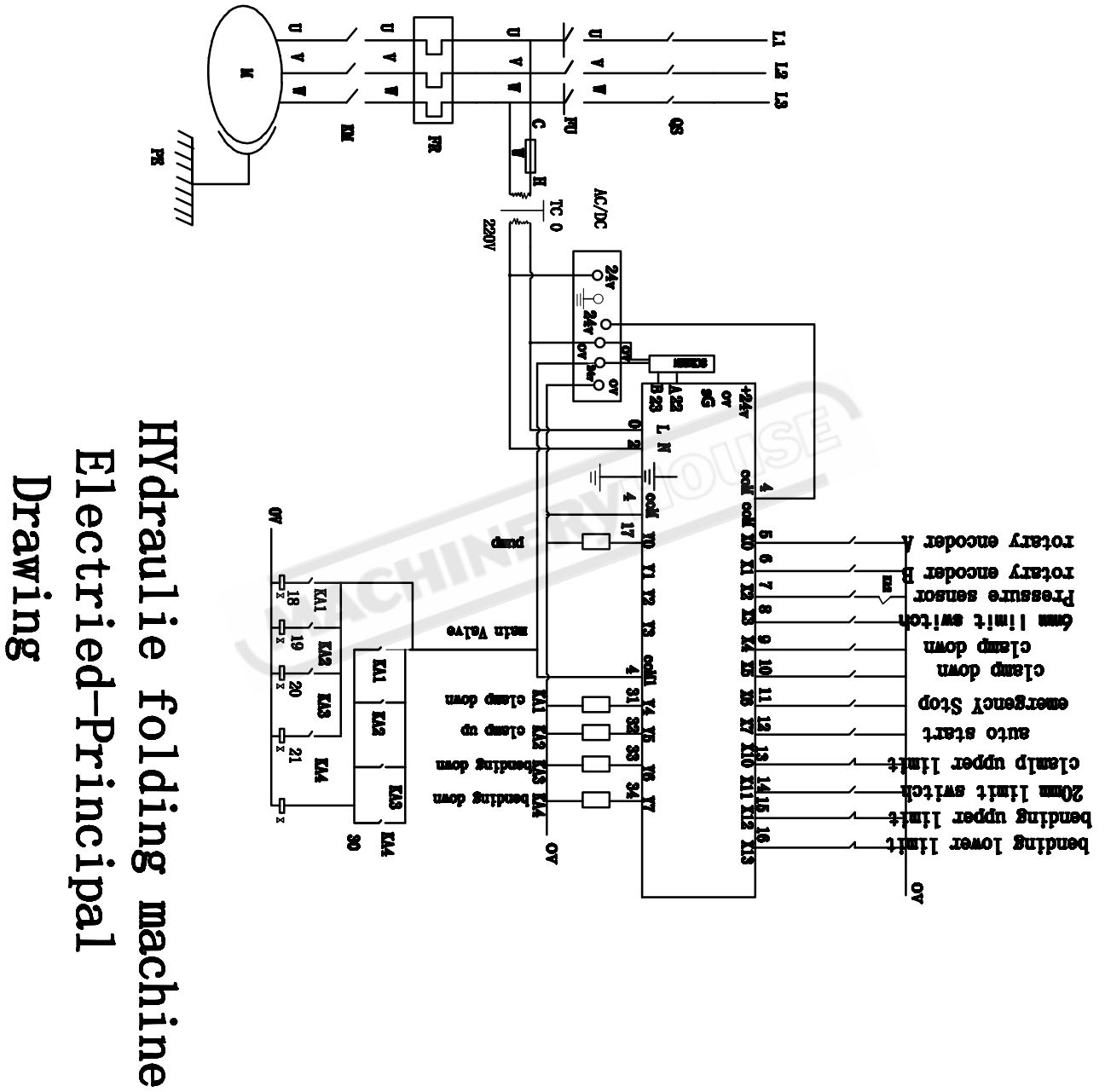
A. Hydraulic Circuit Diagram.....	24
B. Primary Electric Circuit Diagram.....	25
C. NC-89 Circuit Diagram.....	26
Risk Assessment.....	28

A. HYDRAULIC CIRCUIT DIAGRAM

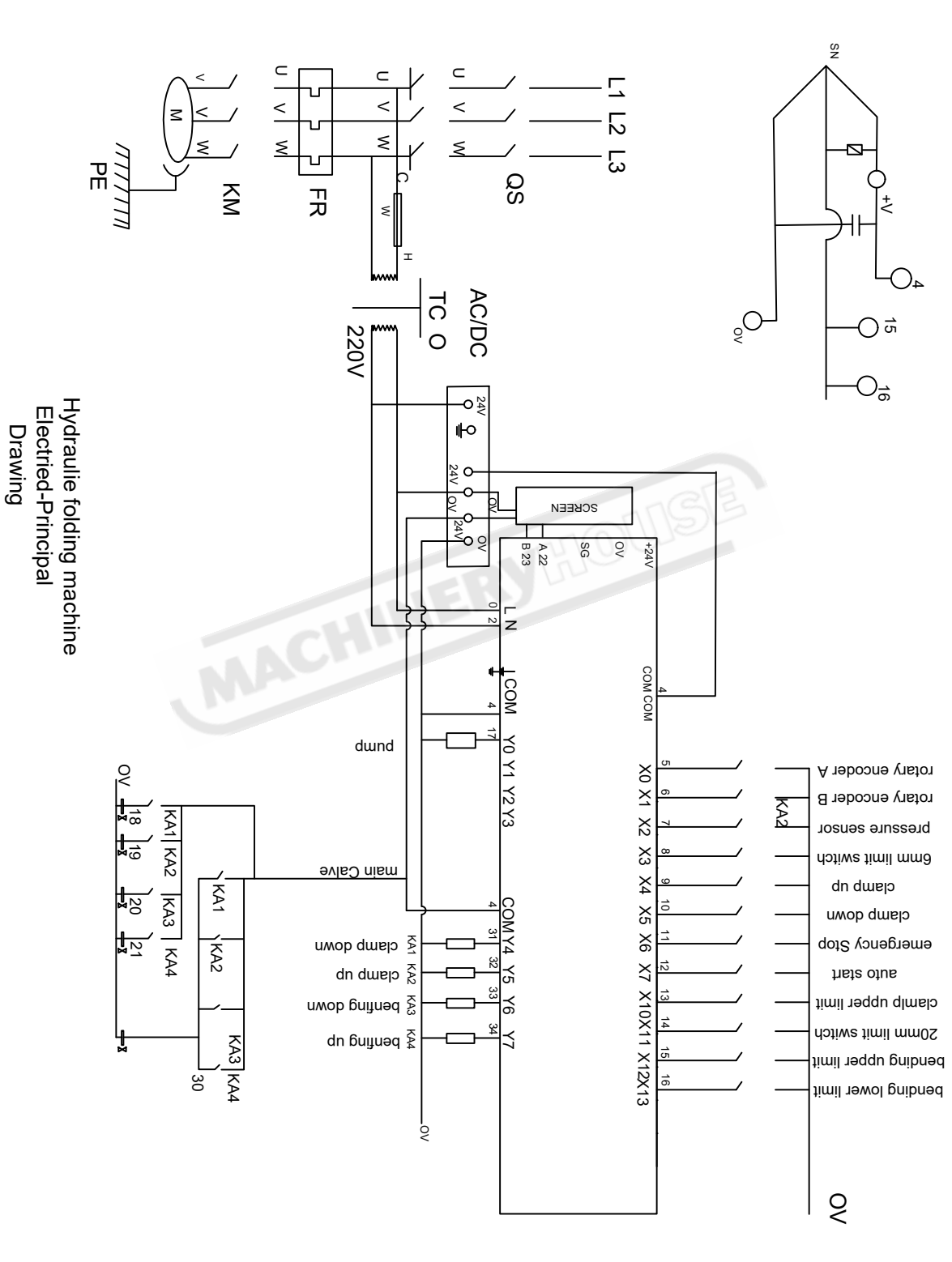


1. Filter
2. Oil Pump
3. Motor
4. Pressure Regulator Control Valve
5. Shut Off Valve
6. Pressure Gauge
7. Directional Control Valve
8. Directional Control Valve
9. Apron Cylinder
10. Position One Way Valve
11. Clamp Cylinder

B. ELECTRIC CIRCUIT DIAGRAM



C. NC89 CIRCUIT DIAGRAM



C. NC89 CIRCUIT DIAGRAM Cont.

